

“A situation
becomes a *crisis*
when it overwhelms
the government’s
ability to respond”

vinay gupta hexayurt@gmail.com



question time

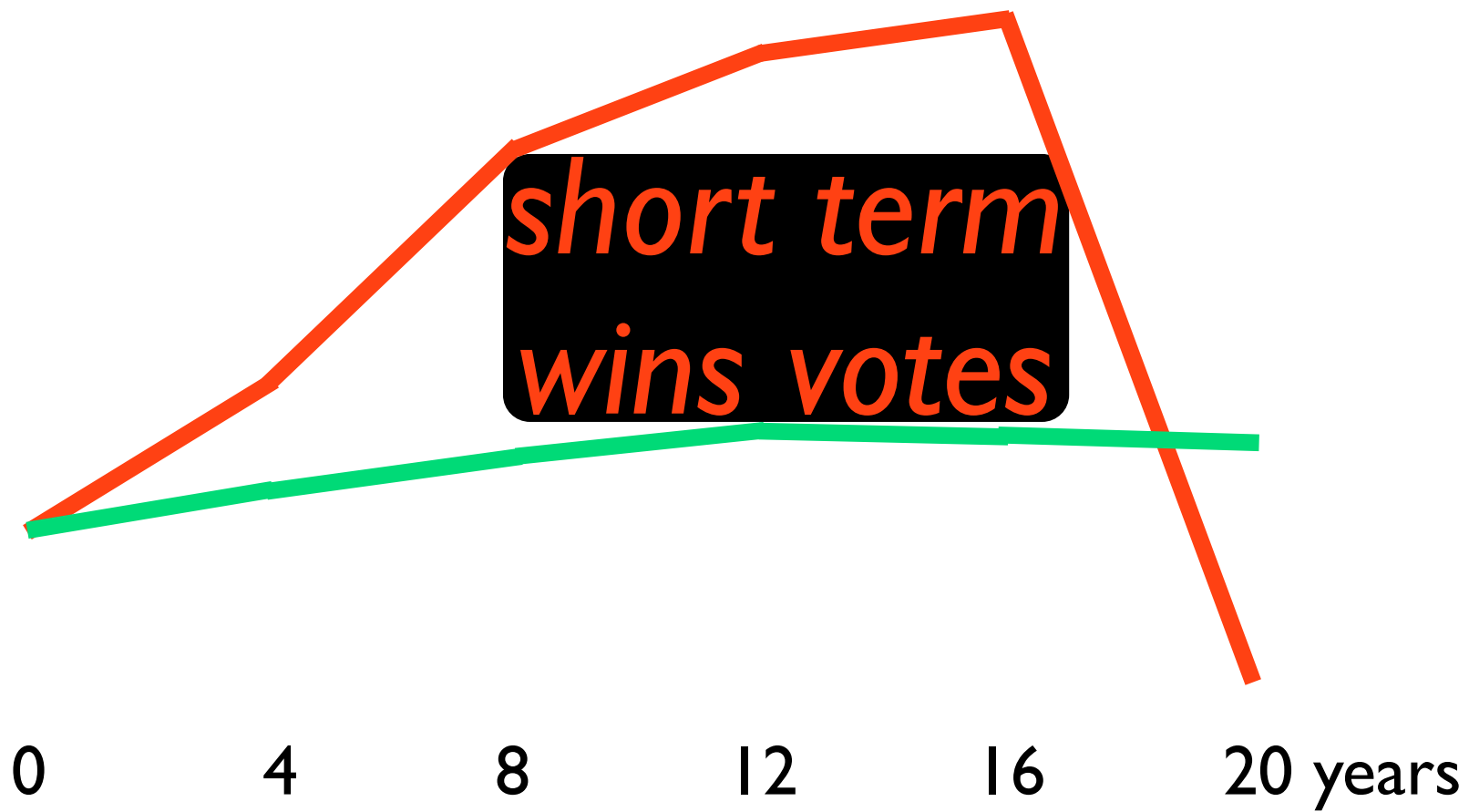


we collectivized
risk management
in government

environment: *fail*

economy: *fail*

extraordinary risks: *fail*



China managed
One Child Family but
absolute power corrupts

conclusion government
is the wrong place to
manage big risks

it is not working
we cannot fix it
now what?





the failure of the State
to do risk management
returns risk to us

what could we use
instead of the State
for managing our risk?

Survivalism

mitigate all risks, live in
woods (with guns)

Green Wizards

individual experts

socially sharing skills

Transition Towns

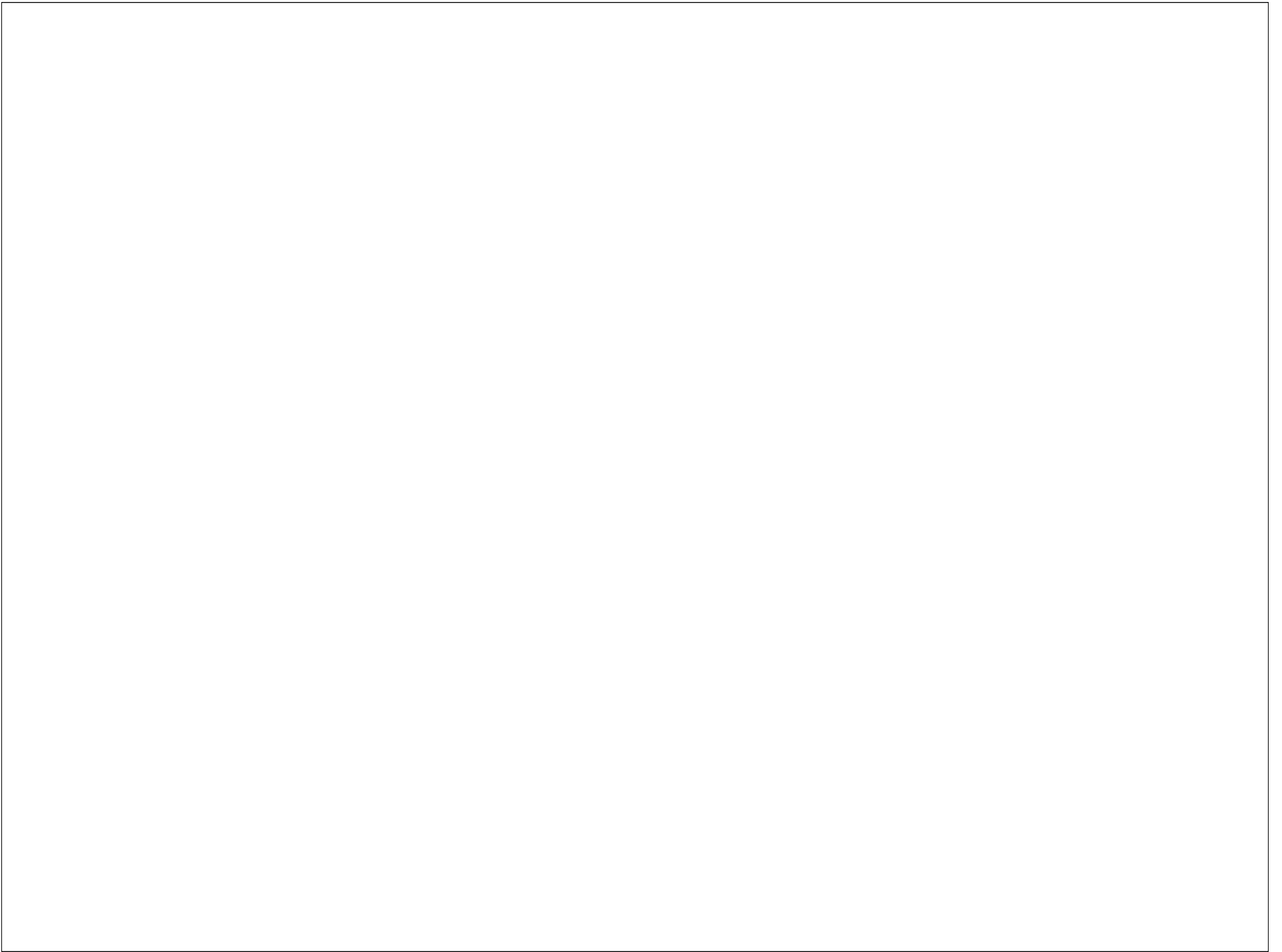
social cooperation for
rising resource prices

Dark Mountain

change cultural reality,
refresh our possibilities

how do we
understand and evaluate
risk handling options?





some focus on the
threat

nukes, climate, flu, sea,
peak oil, bio all have
threat-focused groups

threat-focused groups
try to prevent or mitigate
their target risk

only a very few
threat-focused groups
fix their target risk

others focus on the
reaction

humanitarian NGOs
like the Red Cross are
reaction-focused groups

when a crisis happens
they try to clean up
and help people cope

we need both
threat and *reaction*
focused capabilities

managing risks

1) *detect*

2) *avoid* *

3) *mitigate* *

4) *recover*

* success here is victory

managing risks

threat 1) *detect*

focused 2) *avoid*

3) *mitigate* reaction

4) *recover* focused





all of these groups
function in
the context of the state

we are worried that
the state may *fail*
in some scenarios

sovereign default

systemic catastrophe

*how do we manage the
risk of state failure?*





where are we?

we are worried about
the planet and all the life
we live in symbiosis with

we are worried about
industrial civilization (aiac)*
which we depend on

**aiac - agro-industrial auto-catalysis*

we are worried about
the *health of the state* in
financial collapse

we are worried about
our families and friends
in this uncertain future

we are worried about
our own comfort/survival
(unsustainable = stops!)

we are worried about

a local or global

USSR Argentina Iraq

Afghanistan Detroit

or worse





back to first principles

threat modeling

war is the fundamental
risk that governments
are prepared to fight

not all risks look like *war*
how can we model risks?

describing risks

scope

severity

complexity

source

odds

scope

individual to
the whole world

severity

inconvenience
to destruction

complexity
point risks
system risks

source

humans*

other species

physical systems

* individual, group, organization or state

odds

impossible to
certain

examples

spilled milk

scope

kitchen table

severity

no use crying over it

complexity

point risk

source

humans

odds

uncommon

crime

scope

individuals

severity

theft to murder

complexity

point risk

source

humans

odds

uncommon

asteroid strike

scope

national to global

severity

destruction

complexity

point risk

source

physics

odds

low

plague

scope

human race

severity

substantial mortality

complexity

systems risk

source

other species

odds

common in the past

climate change

scope

global

severity

severe disruption

complexity

systems risk

source

humans

odds

ongoing

financial collapse

scope

global economy

severity

serious disruption

complexity

systems risk

source

humans

odds

common in the past

financial collapse

scope

global economy

severity

serious disruption

complexity

systems risk

source

humans

odds

nearly happened in 2008

financial collapse

scope

global economy

severity

serious disruption

complexity

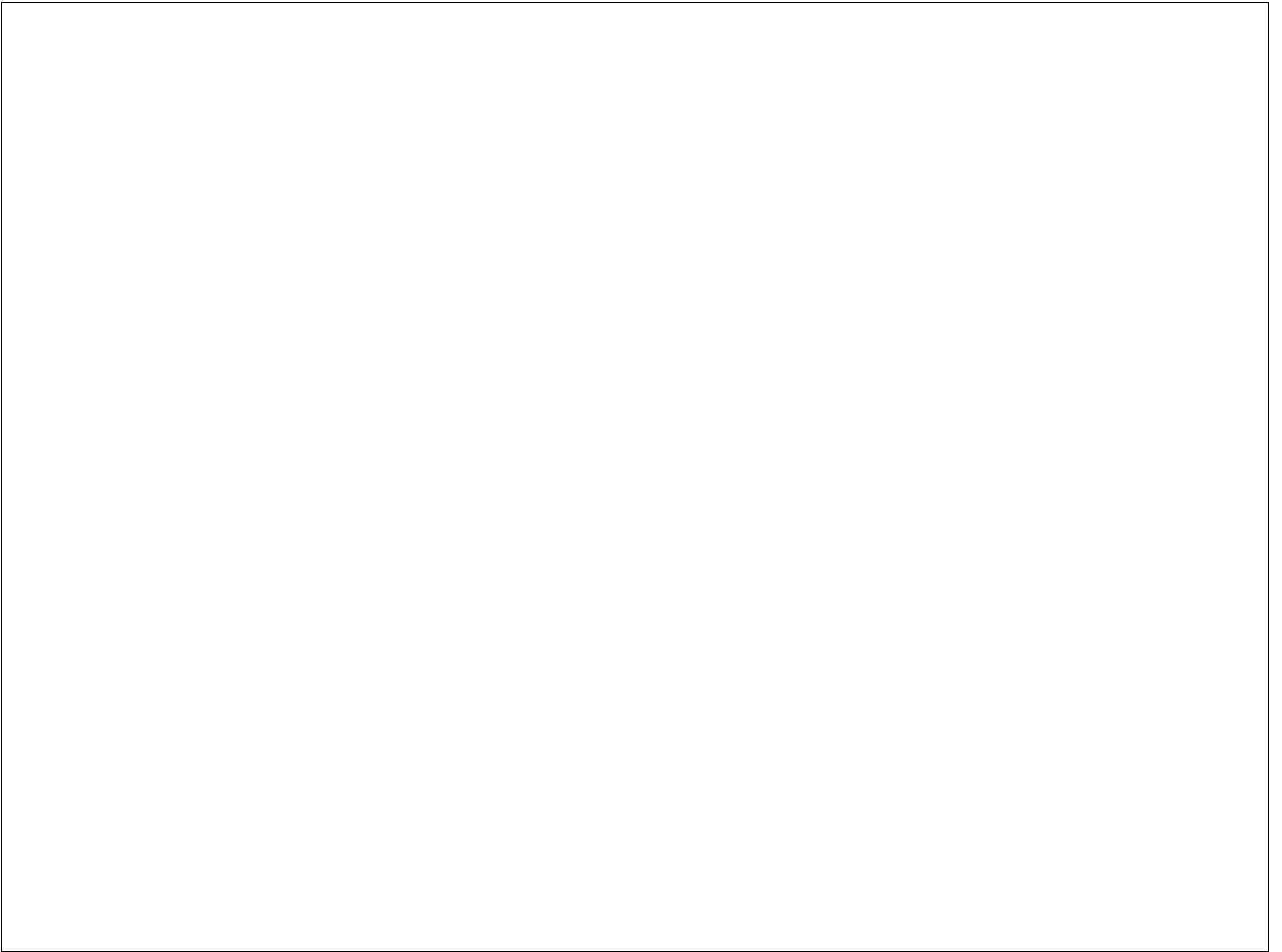
systems risk

source

humans

odds

ongoing?



climate change and
financial collapse share
deep complexity and
global scope

worse both are driven
by a fundamental human
distaste for limits and
failed governance

we are our own
and the planet's
worst enemies





*so are we ready
to start planning?*



provenance

“State in a Box” project
on Iraq for US DOD*

*never used

objective figure out how
to keep a country
running in a war zone

critical tools

rapidly enable

complex cooperation

*“unity of effort .
without
unity of command”*

bit of overkill for peak oil?

reaction oriented not
threat oriented model

goal keep the systems
that keep you alive
running & transforming

step 1

identify the systems
that keep you alive

step 2

identify the threats to
those systems

step 3

avoid threats and
mitigate risks to systems

step 4

repeat until your area of
concern is safe enough



problem 1: isolation

you control very little of
what you need to live

problem 2: competition
systems are centralized,
efficient, cheap, brittle

problem 3: permission
status quo is mandated
by same orgs failing to
provide safe systems

problem 4: priority
cf guns or butter? cf
solar panels or hospitals?

methodology

find interdependencies
in the global system and
harden all vital links



VUCA
(volatile, uncertain,
complex, ambiguous)
complex operations

complex
contingency
wicked
problem

VUCA
(volatile, uncertain,
complex, ambiguous)
complex operations

complex
contingency
wicked
problem

this is insoluble
it's too complicated
we need a map





Simple Critical Infrastructure Maps to the rescue

first, let's identify the actors

individuals

groups

organizations

states

these are our teams

Simple Critical
Infrastructure Maps
asks a simple question:

*what does each actor need
to survive?*

individual survival

too hot

too cold

hunger

thirst

illness

injury

groups

communications

transportation

workspace

resource control

organizations

shared map

shared plan

shared succession

states

effective organizations

list of citizens

map of territories

jurisdiction

international recognition

18 points to ensure the
basic survival of all
concerned

SCIM keeps people alive
until you have a strategy
it is triage to buy time

why is it so simple from
this angle?

*very little of our energy
goes into basic survival*

SCIM constrains the
problem and presents
*a manageable set of
system interdependencies*

keep everything alive

constrain the problem





*we still have to deal with
interdependencies*

aiiac*

*agro-industrial auto-catalysis
a big idea in a little word

[eye-ack]

aiac is the
technical “biosphere”
which supports our lives

aiac is like a fire,
autocatalytic
feeding on itself

cheap food, energy & tools
enable us to make more
cheap food, energy & tools
enable us to make more
cheap food, energy & tools
enable us to make more
cheap food, energy & tools

cheap food
cheap energy
cheap tools

cheap food
cheap energy
cheap tools

aiac has two small issues

extractive on one end

polluting on the other

without it we starve

with it we poison the world

aiac is mankind's
imitation of nature
out of control

“collapse of civilization”
actually means
“death of aiac”

it is the fire that has
burned since the start of
farming *going out*

we must repair and
improve aiac but we
must also *survive* it

closed-loop industrial
ecologies and renewable
energy can fix our aiac

but that could take
decades, and we are
running out of *time*





back to the near term

Survivalism

individual and group

short term

stockpile-oriented

Green Wizards

rapid roll-out of
individual and group
systems from skill banks

Transition Towns

group & org strategy
for maintaining supply
chains & infrastructure

Dark Mountain

managing expectation by
imagination to make
room for adaptation

each group addresses a
different overlapping
part of the *whole system*

Integrated Needs Analysis



individual	household	village / neighborhood	town / city / municipality	region	country	world
------------	-----------	------------------------	----------------------------	--------	---------	-------

- injury
- illness
- thirst
- hunger
- too cold
- too hot

resilience gap

			medical / police		army	
toilets	sewer system		sewage plants			
water supply	water mains		water processing			

food supply chain	retailer logistics	bulk logistics	imports	intl markets
-------------------	--------------------	----------------	---------	--------------

heating	local grid	power plants	national grid	fuel imports	intl markets
---------	------------	--------------	---------------	--------------	--------------

- cooling
- housing

- not shown
- power company
- air/ports/harbors

fuel supply

ports / airports

travel / embargos

diesel generators

electricity	cell towers, cables	local hubs	regional hubs	fiber lines	undersea cables
-------------	---------------------	------------	---------------	-------------	-----------------

satcom

- transport
- space
- communications
- resource control

sharing	administration	rule of law
---------	----------------	-------------

← civil — jurisdiction

- shared succession
- shared plan
- shared map

SCIM:INAM for a typical developed world nation

- rule of law
- cohesion
- consensus

← corporate — jurisdiction

objective facts ("legal facts")

- international recognition
- effective institutions
- citizens list
- territory map
- jurisdiction

consent of governed

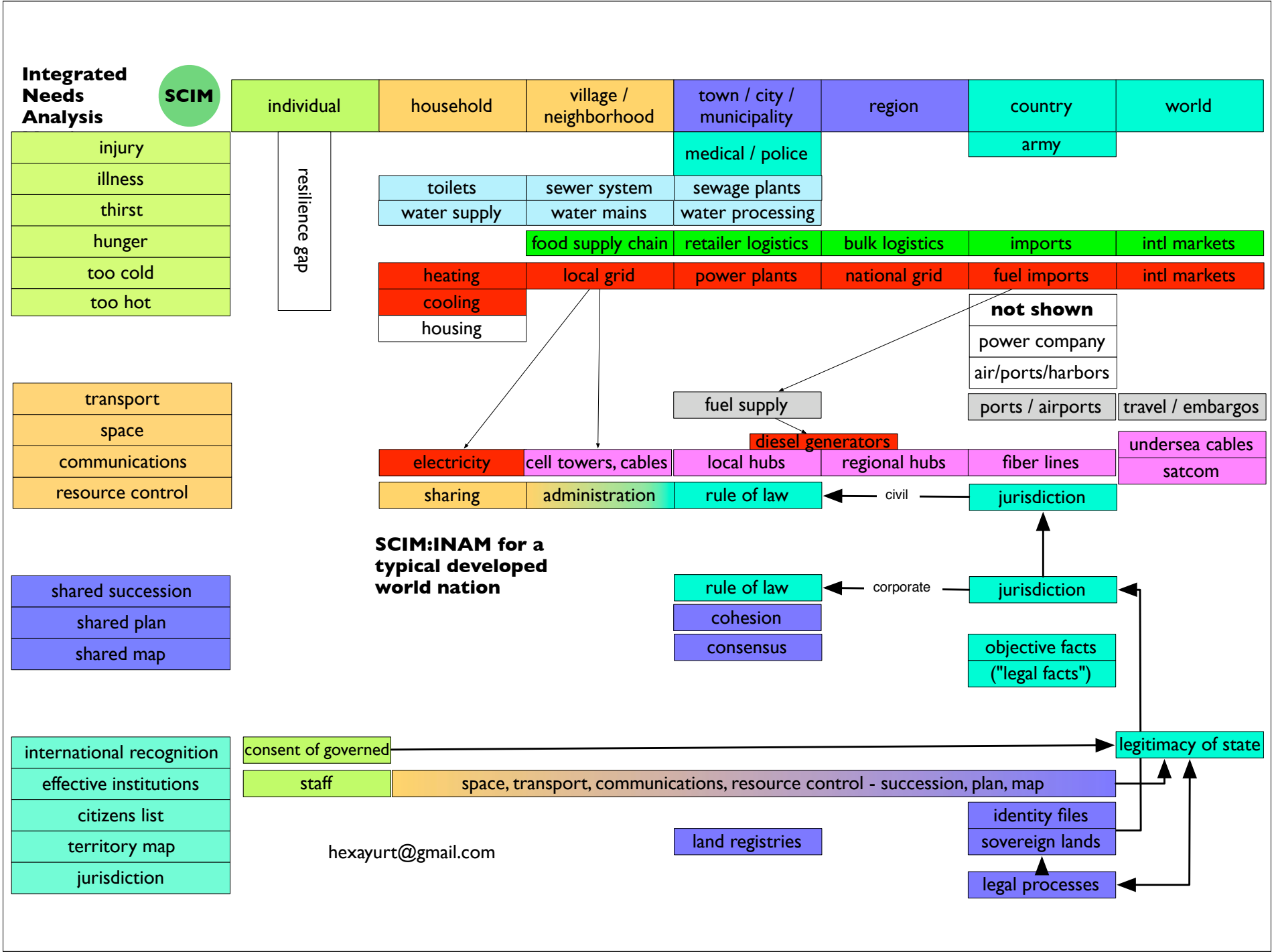
legitimacy of state

staff space, transport, communications, resource control - succession, plan, map

hexayurt@gmail.com

land registries

- identity files
- sovereign lands
- legal processes



what is critical is the
interdependencies and
areas of cooperation

Integrated Needs Analysis



individual	household	village / neighborhood	town / city / municipality	region	country	world
------------	-----------	------------------------	----------------------------	--------	---------	-------

- injury
- illness
- thirst
- hunger
- too cold
- too hot

resilience gap

			medical / police		army	
toilets	sewer system		sewage plants			
water supply	water mains		water processing			

food supply chain	retailer logistics	bulk logistics	imports	intl markets
-------------------	--------------------	----------------	---------	--------------

heating	local grid	power plants	national grid	fuel imports	intl markets
---------	------------	--------------	---------------	--------------	--------------

- cooling
- housing

- not shown
- power company
- air/ports/harbors

- transport
- space
- communications
- resource control

fuel supply

ports / airports

travel / embargos

diesel generators

electricity	cell towers, cables	local hubs	regional hubs	fiber lines	undersea cables
-------------	---------------------	------------	---------------	-------------	-----------------

satcom

sharing	administration	rule of law
---------	----------------	-------------

← civil — jurisdiction

SCIM:INAM for a typical developed world nation

- rule of law
- cohesion
- consensus

- shared succession
- shared plan
- shared map

- jurisdiction
- objective facts ("legal facts")

- international recognition
- effective institutions
- citizens list
- territory map
- jurisdiction

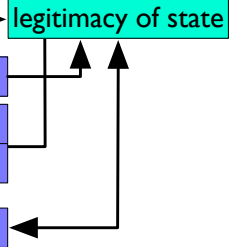
consent of governed → legitimacy of state

staff → space, transport, communications, resource control - succession, plan, map

hexayurt@gmail.com

land registries

- identity files
- sovereign lands
- legal processes



Integrated Needs Analysis

SCIM

individual	household	village / neighborhood	town / city / municipality	region	country	world
------------	-----------	------------------------	----------------------------	--------	---------	-------

- injury
- illness
- thirst
- hunger
- too cold
- too hot

survivalists

resilience gap

toilets	sewer system	sewage plants
water supply	water mains	water processing

food supply chain	retailer logistics	bulk logistics	imports	intl markets
-------------------	--------------------	----------------	---------	--------------

heating	local grid	power plants	national grid	fuel imports	intl markets
cooling					
housing					

not shown
power company
air/ports/harbors

fuel supply

ports / airports

travel / embargos

diesel generators

electricity	cell towers, cables	local hubs	regional hubs	fiber lines	undersea cables
sharing	administration	rule of law		jurisdiction	satcom

SCIM:INAM for a typical developed world nation

rule of law
cohesion
consensus

objective facts
("legal facts")

- transport
- space
- communications
- resource control

- shared succession
- shared plan
- shared map

- international recognition
- effective institutions
- citizens list
- territory map
- jurisdiction

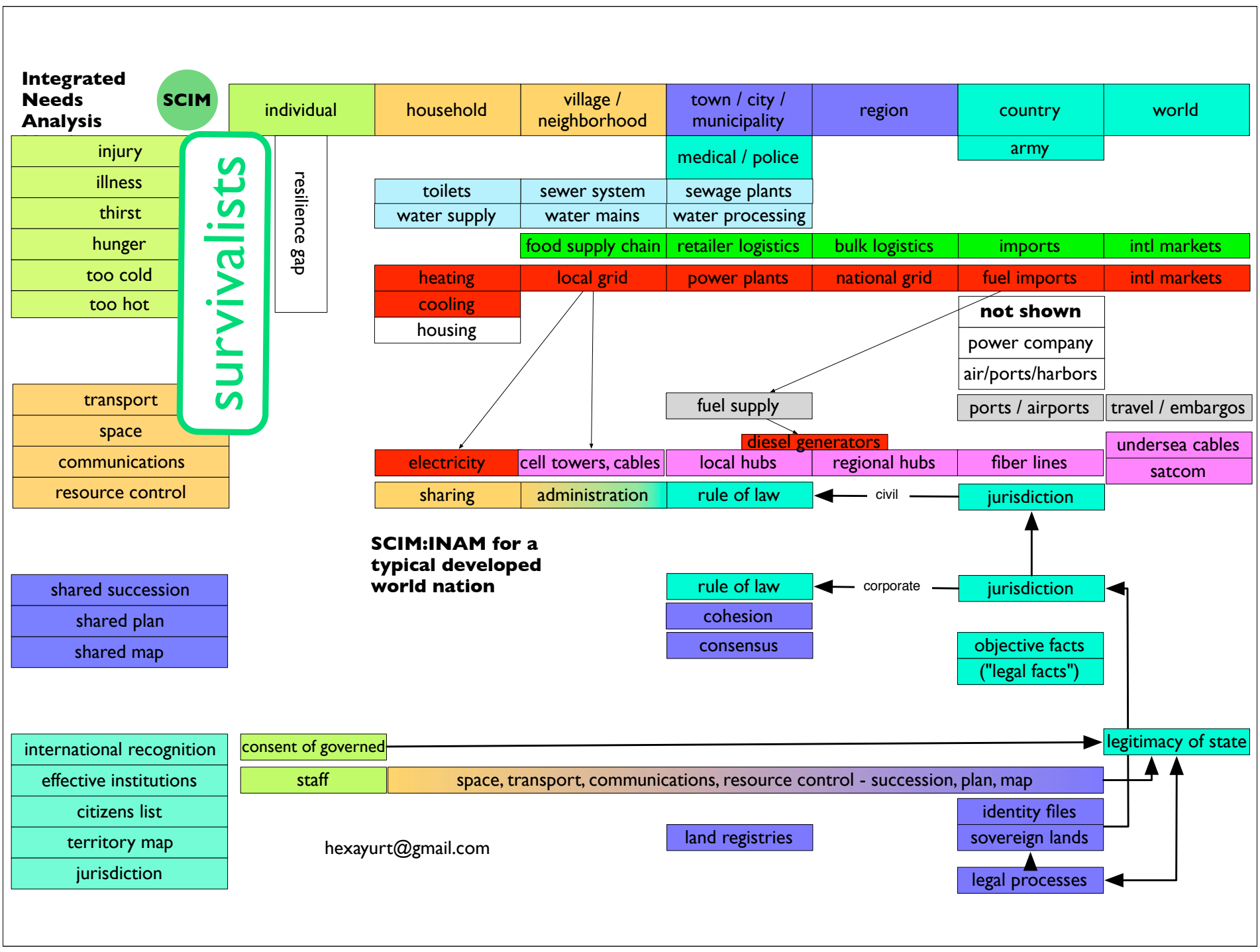
consent of governed → legitimacy of state

staff → space, transport, communications, resource control - succession, plan, map

hexayurt@gmail.com

land registries

identity files
sovereign lands
legal processes



Integrated Needs Analysis

SCIM

individual	household	village / neighborhood	town / city / municipality	region	country	world
------------	-----------	------------------------	----------------------------	--------	---------	-------

- injury
- illness
- thirst
- hunger
- too cold
- too hot

Green Wizards

survivalists

			medical / police		army	
		sewer system	sewage plants			
		water mains	water processing			
		food supply chain	retailer logistics	bulk logistics	imports	intl markets
		local grid	power plants	national grid	fuel imports	intl markets

- transport
- space
- communications
- resource control

- shared succession
- shared plan
- shared map

- international recognition
- effective institutions
- citizens list
- territory map
- jurisdiction

housing

- not shown
- power company
- air/ports/harbors

fuel supply

diesel generators

electricity	cell towers, cables	local hubs	regional hubs	fiber lines	undersea cables
sharing	administration	rule of law		jurisdiction	satcom

SCIM:INAM for a typical developed world nation

- rule of law
- cohesion
- consensus

objective facts ("legal facts")

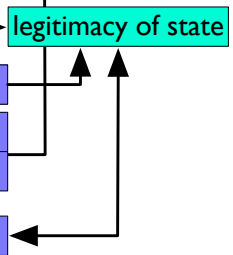
consent of governed → legitimacy of state

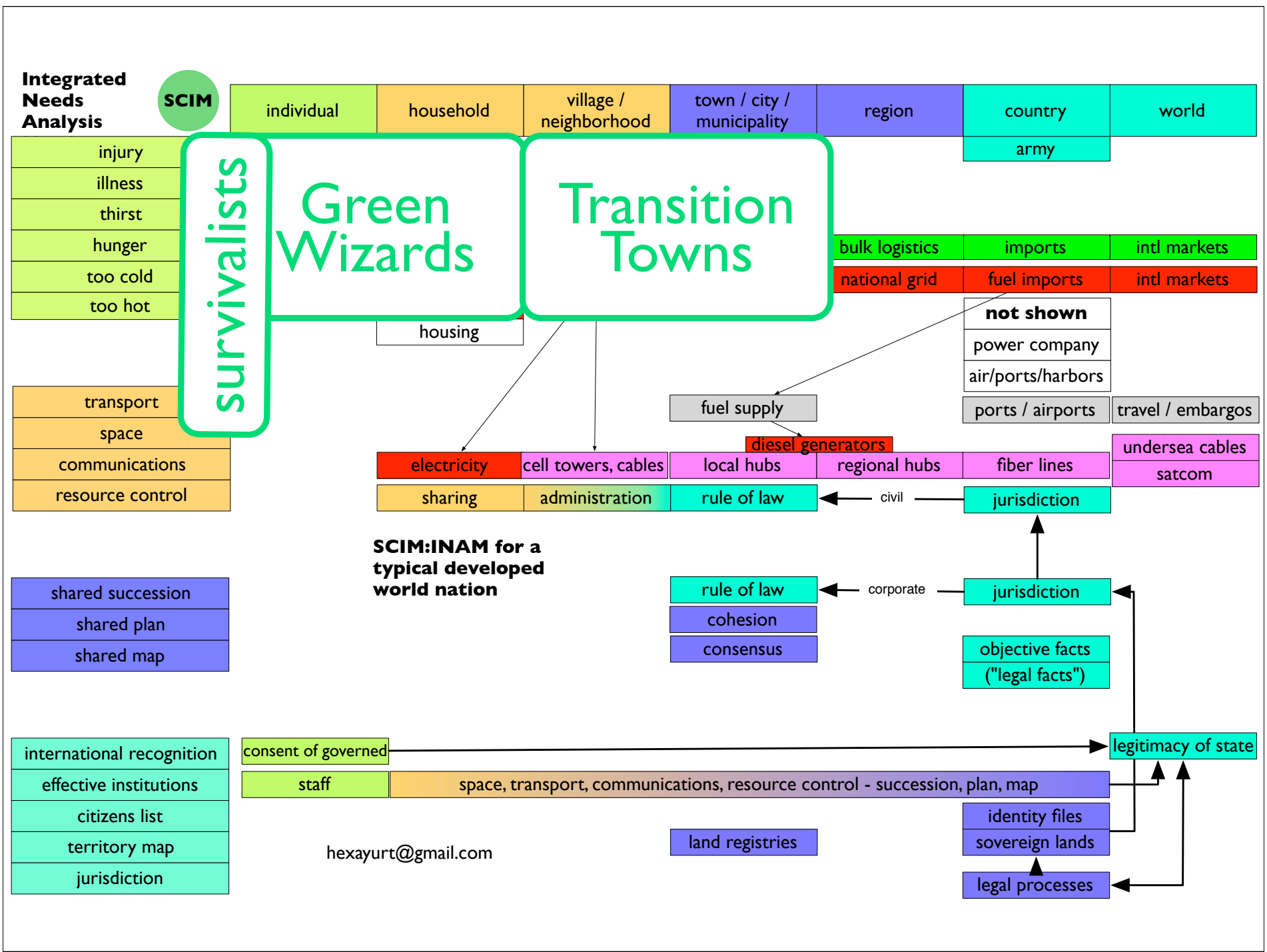
staff → space, transport, communications, resource control - succession, plan, map

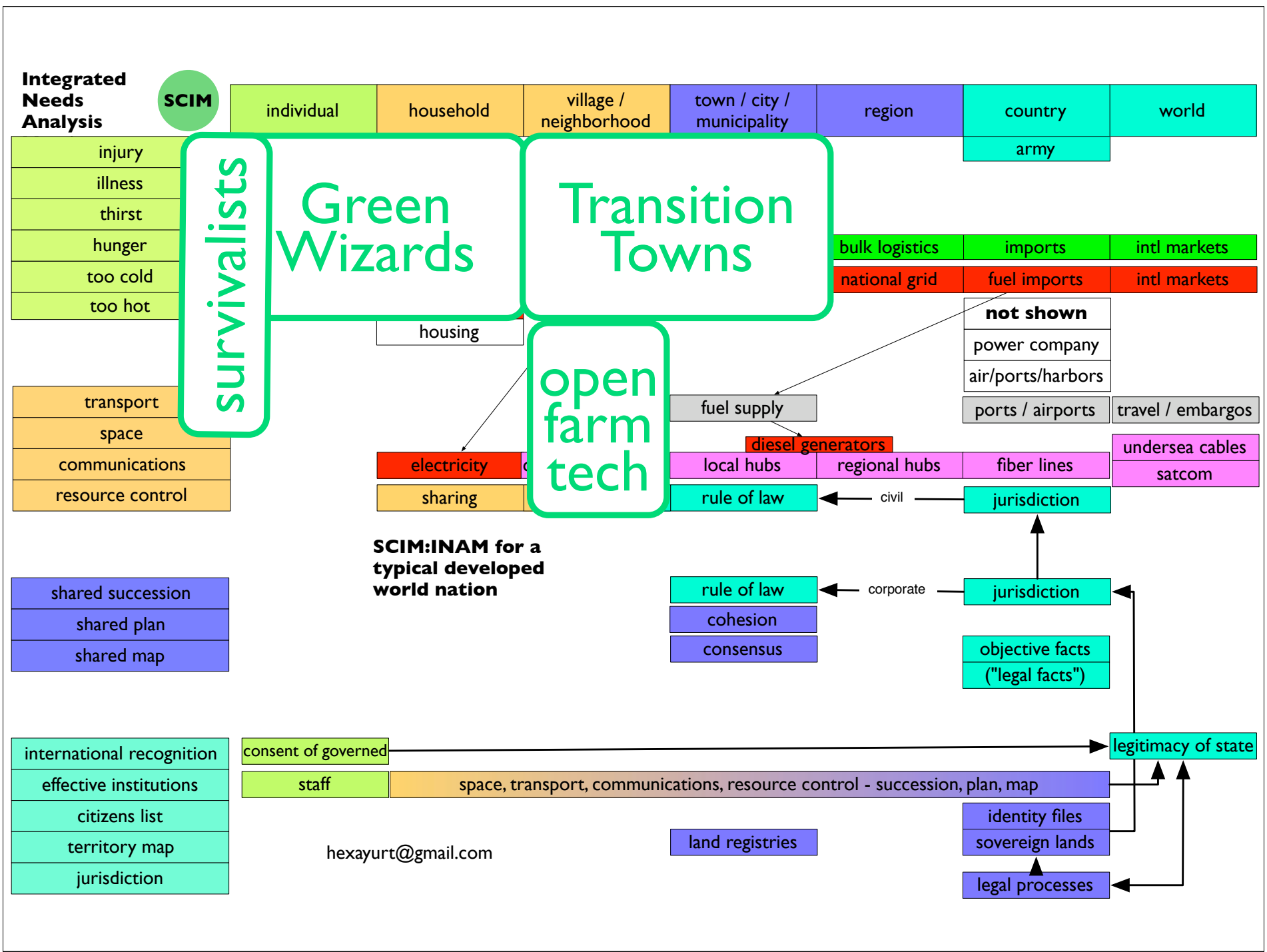
hexayurt@gmail.com

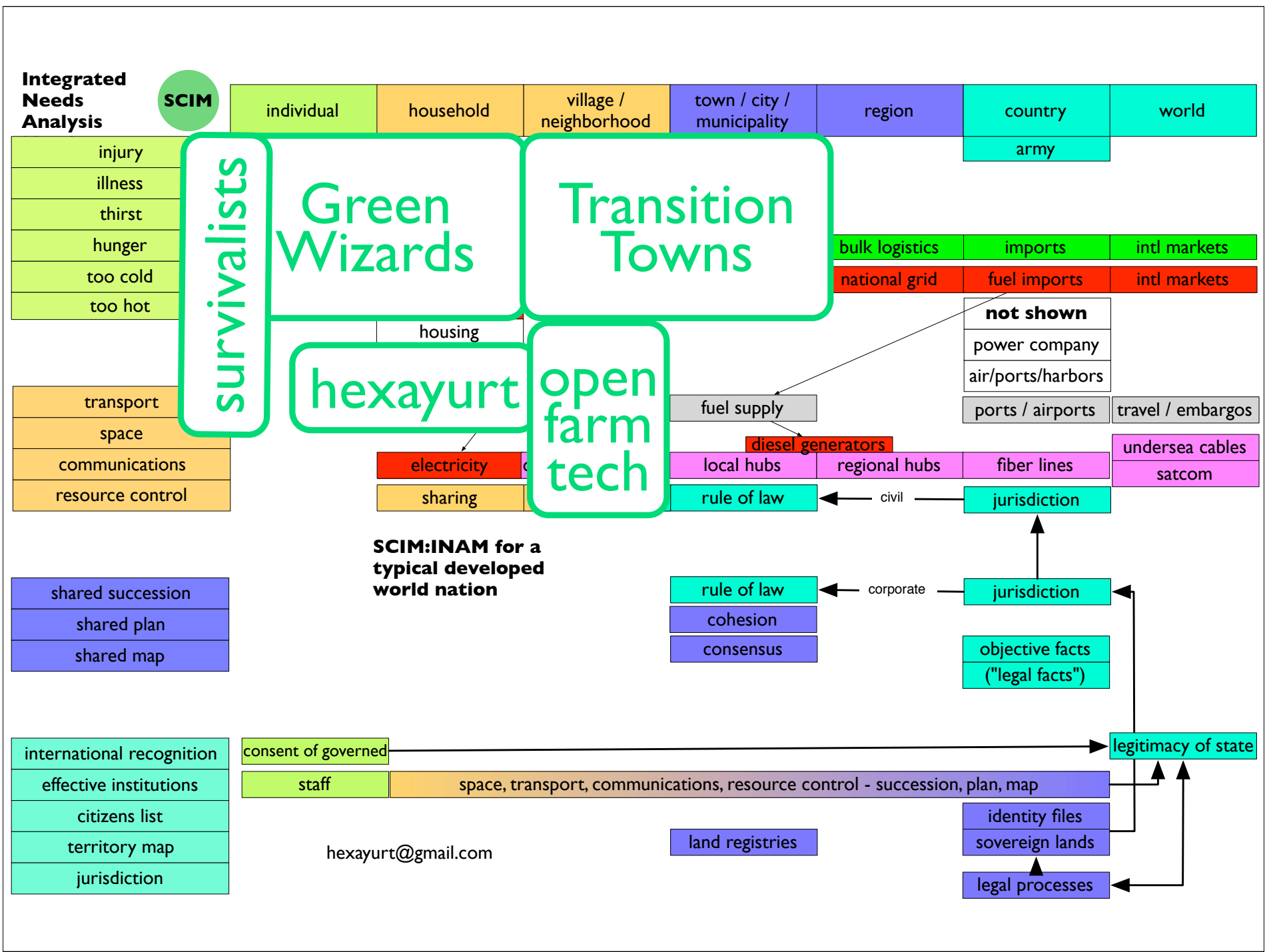
land registries

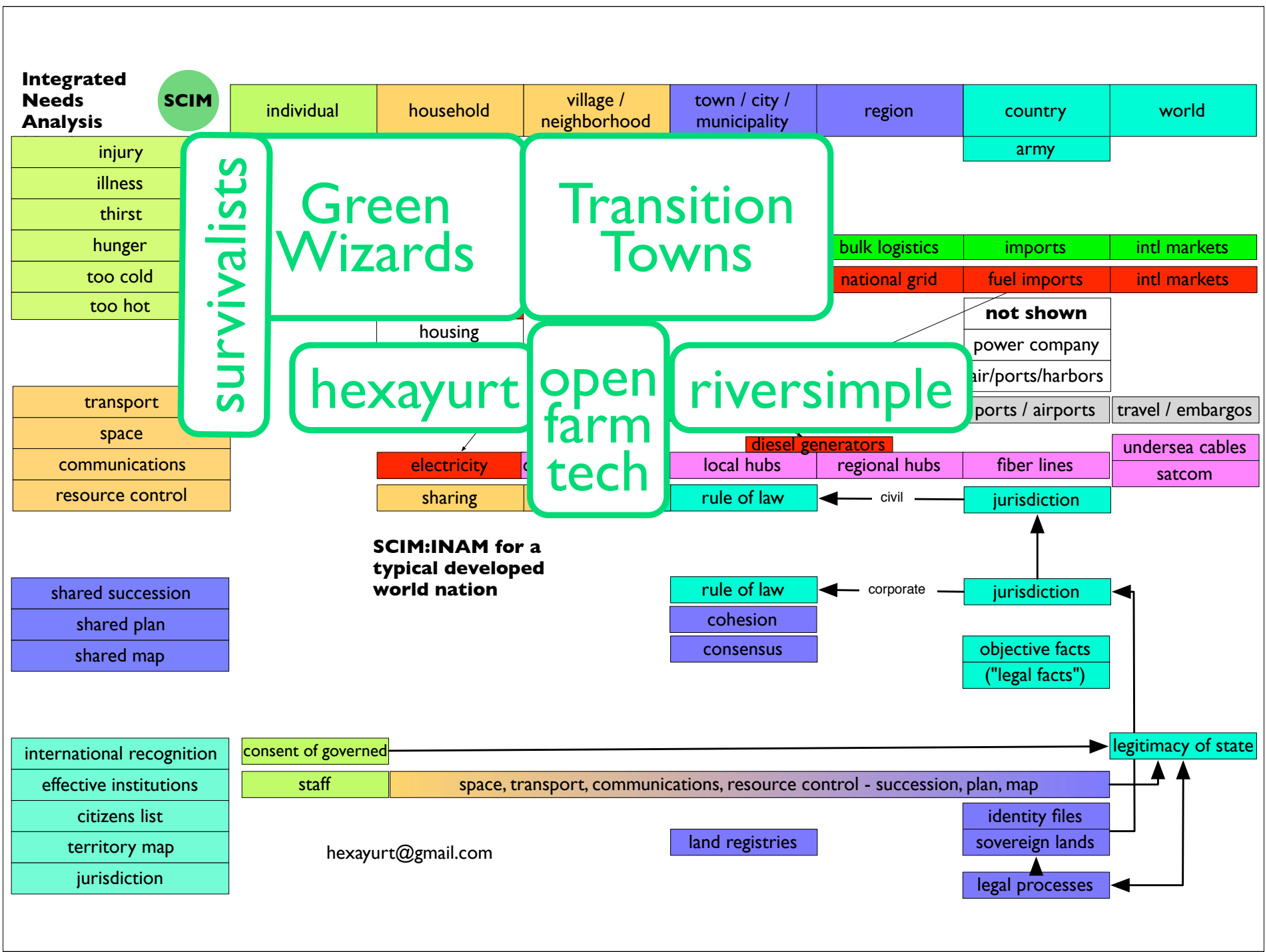
- identity files
- sovereign lands
- legal processes

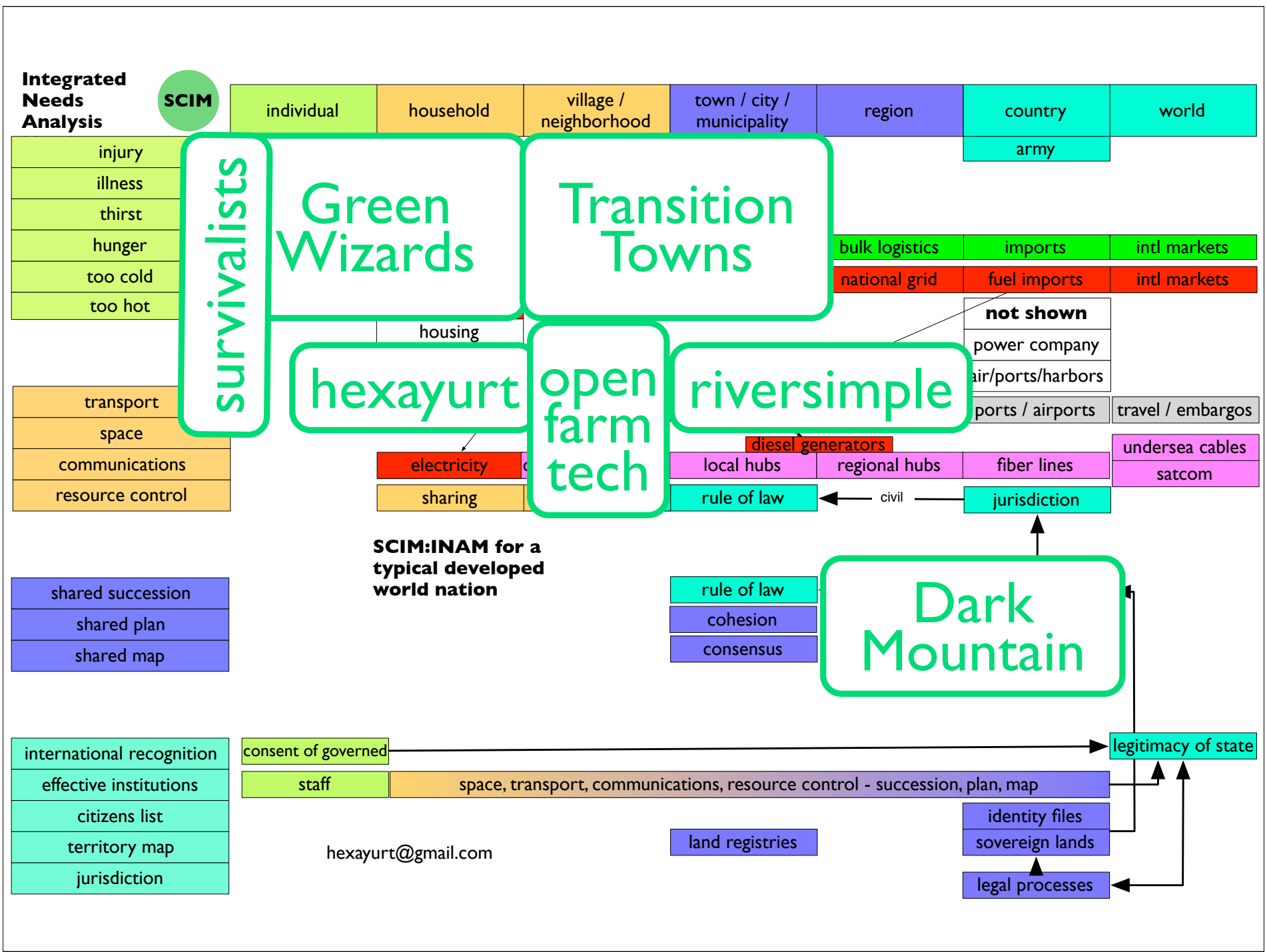


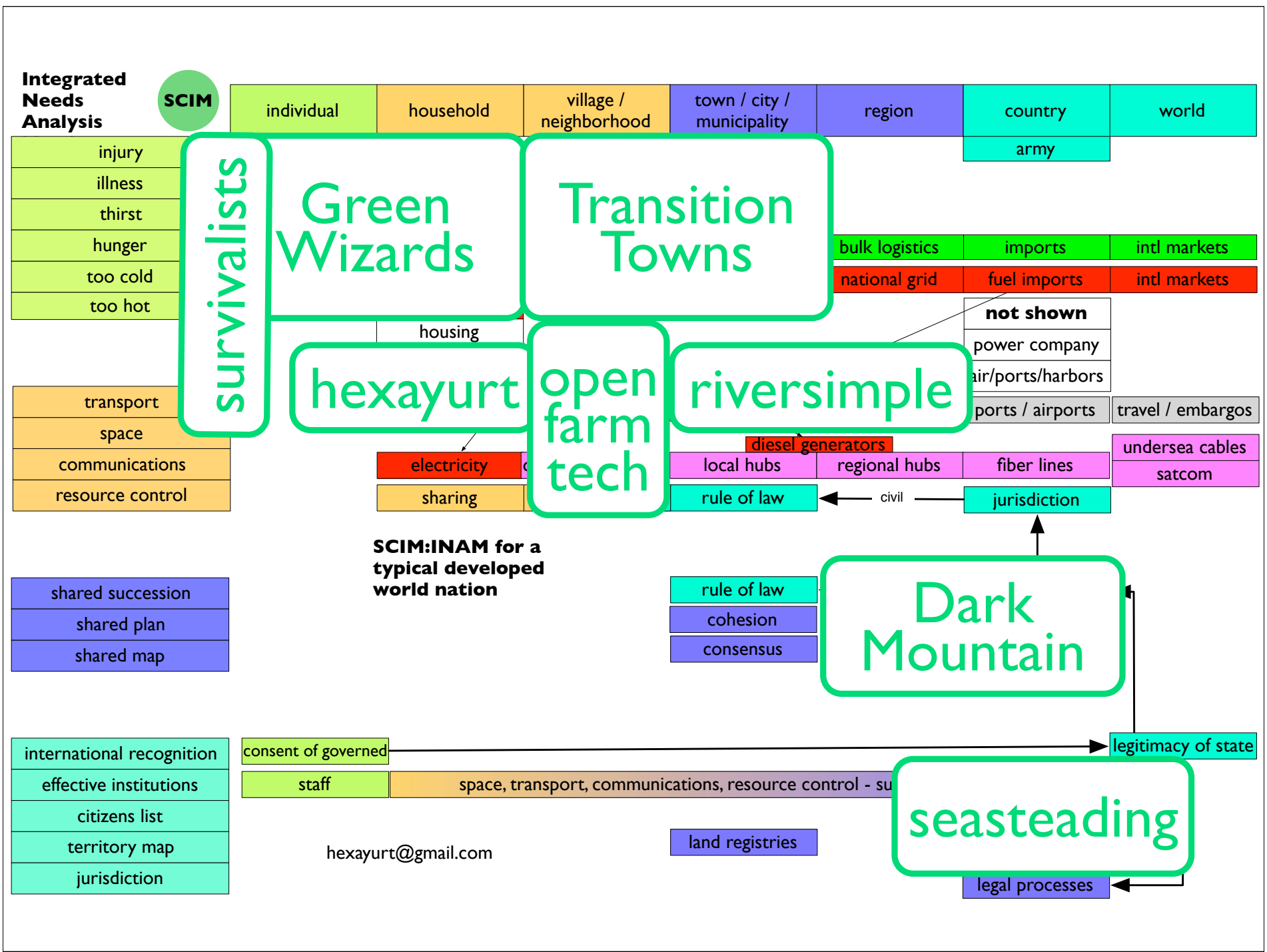












Integrated Needs Analysis



individual	household	village / neighborhood	town / city / municipality	region	country	world
------------	-----------	------------------------	----------------------------	--------	---------	-------

- injury
- illness
- thirst
- hunger
- too cold
- too hot

resilience gap

			medical / police		army	
toilets	sewer system		sewage plants			
water supply	water mains		water processing			

food supply chain	retailer logistics	bulk logistics	imports	intl markets
-------------------	--------------------	----------------	---------	--------------

heating	local grid	power plants	national grid	fuel imports	intl markets
---------	------------	--------------	---------------	--------------	--------------

cooling
housing

not shown
power company
air/ports/harbors

fuel supply

ports / airports

travel / embargos

diesel generators

electricity	cell towers, cables	local hubs	regional hubs	fiber lines	undersea cables
-------------	---------------------	------------	---------------	-------------	-----------------

satcom

sharing	administration	rule of law
---------	----------------	-------------

← civil → jurisdiction

SCIM:INAM for a typical developed world nation

rule of law
cohesion
consensus

← corporate → jurisdiction

objective facts
("legal facts")

- transport
- space
- communications
- resource control

- shared succession
- shared plan
- shared map

- international recognition
- effective institutions
- citizens list
- territory map
- jurisdiction

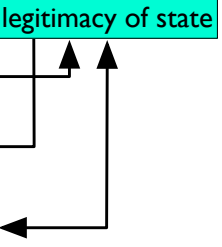
consent of governed → legitimacy of state

staff → space, transport, communications, resource control - succession, plan, map

hexayurt@gmail.com

land registries

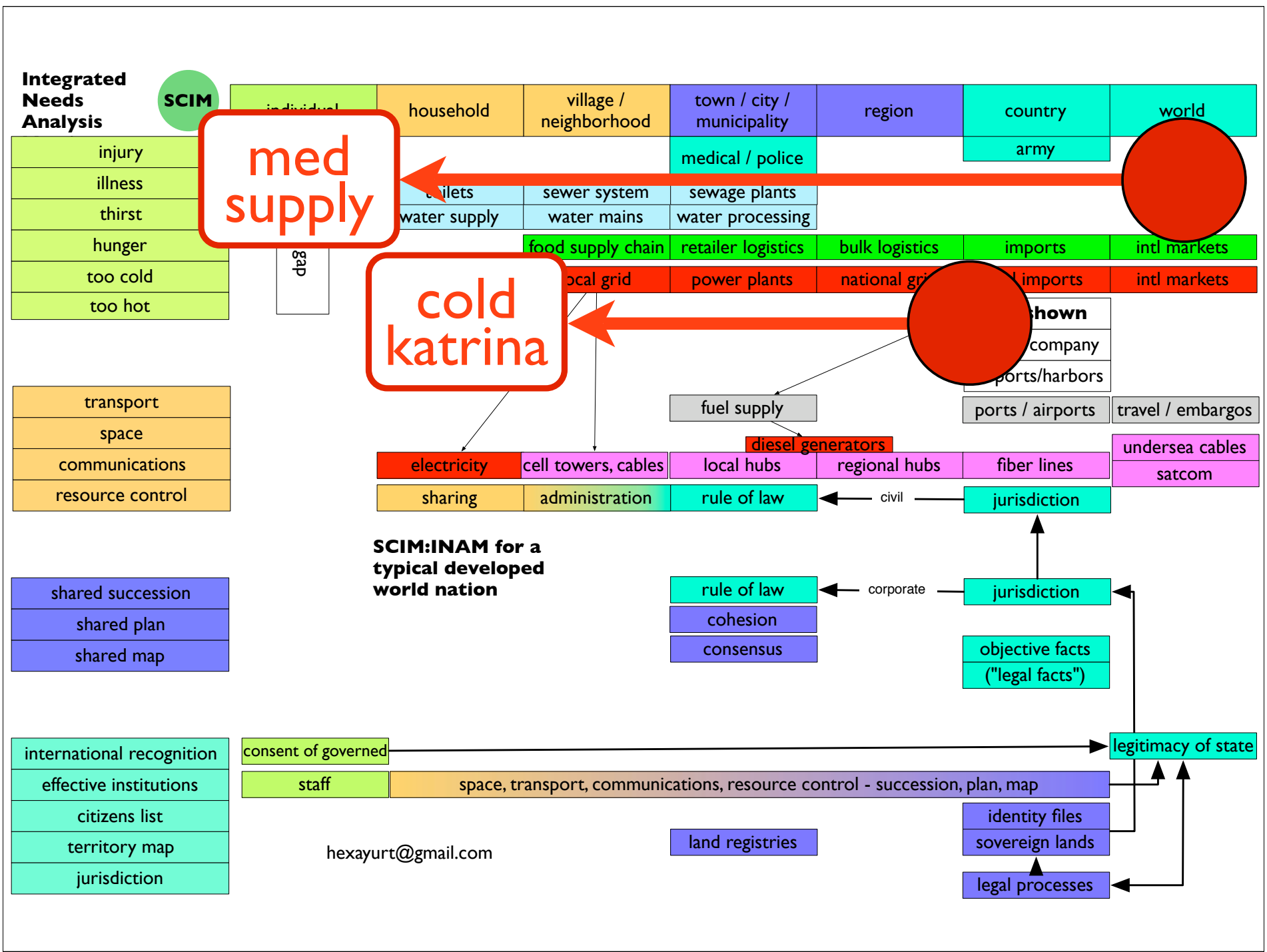
identity files
sovereign lands
legal processes



detailed regional scim
maps can highlight how
people can work
together and share

SCIM highlights two
critical areas:

grid power in cold areas
medical supply chains



scim bridges the gap
between *threat* and
response groups

using mapping tools
groups can reduce
duplication of effort

perhaps we can even
start thinking together
about the long term





in a *point crisis*
government resources
flow from all sides

in a *point crisis*
government resources
flow from all sides

in a *systemic crisis*
government resources
only reach worst cases

if you have government
support, you must be in
big trouble!

managing without govt
support is key to
systemic crisis response

effective mapping of
capacity is key to building
local self-reliance

swadeshi

we may be in for a
rough few years

tech fixes

emergency food reserve

1.3 bn cattle globally

500 person-days each

10 weeks food reserve

far more in US/Europe

how to transport & eat

satellite communications

relatively cheap (\$5000)

voice/data wifi BGAN

all orgs should have this

servers w. inet backup?

user apps on spare boxes

pharmaceutical stockpiling

where in the supply chain?

individuals usually do not

local pharmacy level?

subsidy for stockpile costs

local manufacture

Nubian tetracycline beer?

population resettlement

10m+ in too-cold risk areas

grid fail = cold katrina

food supply chain fail means

resettling on ag land

emergency permaculture

hexayurt shelter + utilities



hexayurt shelter



burning man 2010

hexayurt shelter





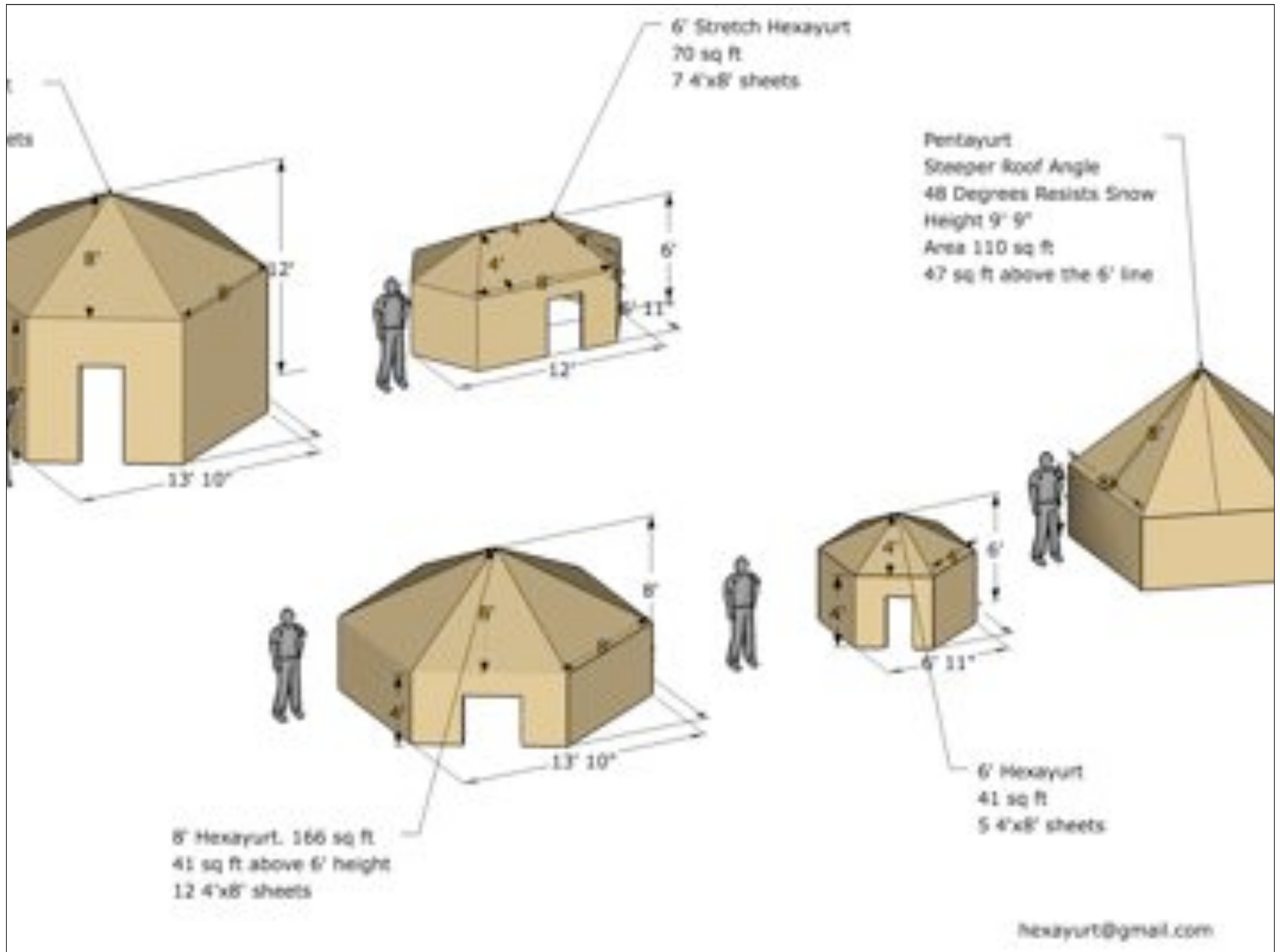
burning man 2010

wood hexayurt (haiti)



grassroots united





resources

“dealing in security”

“how to reboot civilization”

“the living city - london”

“hexayurt project”

<http://hexayurt.com/plan>



The
Future
We
Deserve

collaborative futures book
seeking submissions!